

# Ground Source Heat Pump Association

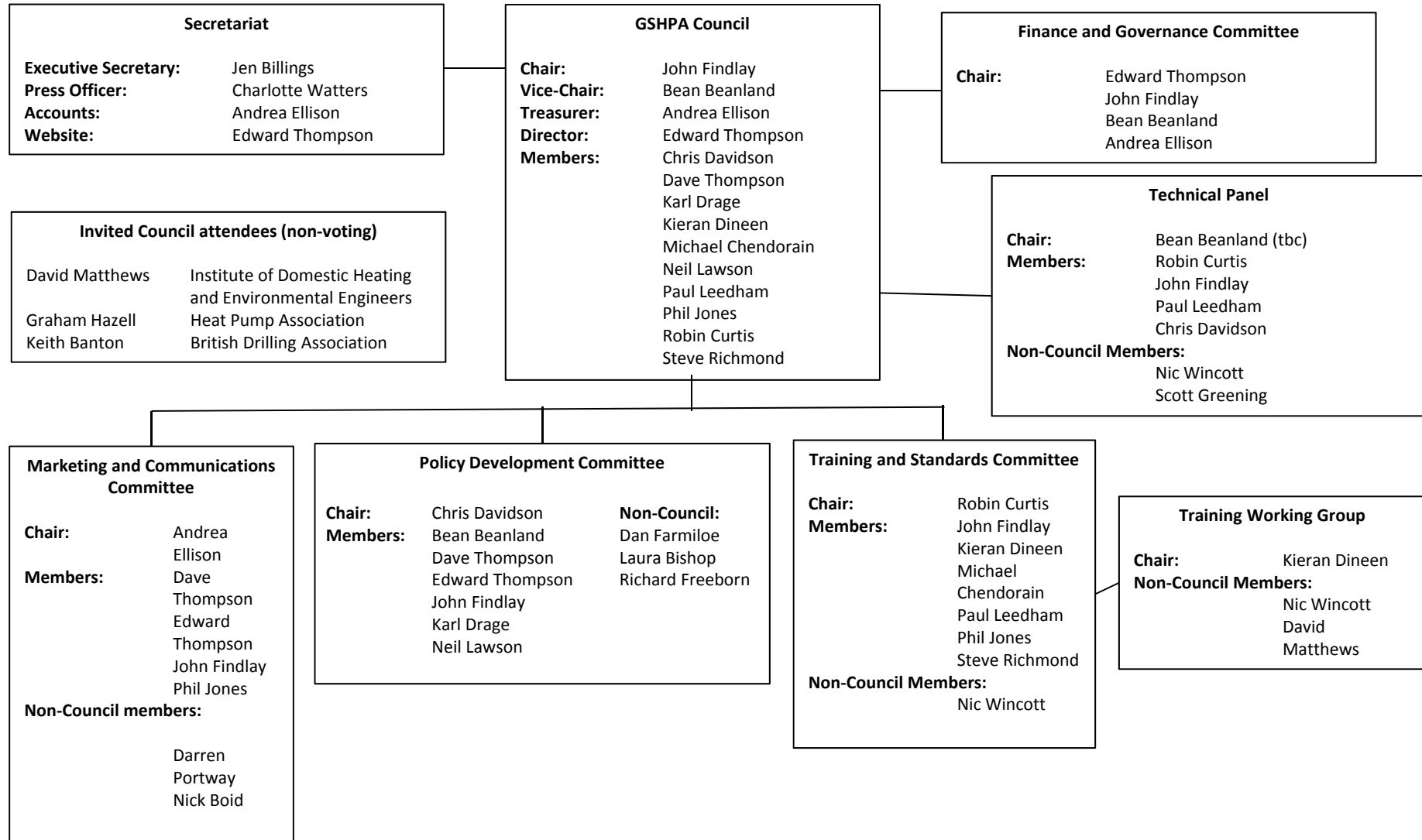
2017 Expo

GSHPA Chairman

John Findlay

# GSHPA Organogram

## The Ground Source Heat Pump Association



# Our Membership

2017: small increase with some members leaving and others joining. Our membership divides into:

- Installer – 56
- Consultant – 15
- Driller – 17
- Suppliers to the industry – 13
- Heat pump suppliers – 3
- Trade Associations – 3
- Ancillary companies – 2
- Not for profit organisations – 1
- Individuals – 6

## Some of our achievements in 2016/2017

- Launch, widespread acceptance & appreciation of CP2 (Surface water source heat pumps)
- Commence work on CP3, Open loop borehole systems
- Update, re-format, re-issue of GSHPA Standards
- Transfer of ownership (from Environment Agency) and significant update of 'Environmental Good Practice Guide'

# Environmental Good Practice for Heating and Cooling



Ground Source Heat Pump Association

**Environmental good  
practice guide for  
ground source heating  
and cooling**

September 2017  
Version 2

© GSHPA 2017  
Email: [info@gshp.org.uk](mailto:info@gshp.org.uk)



Launch of GSHPA's Environmental Good Practice Guide for Heating and Cooling



## Achievements, continued

- Ongoing lobbying & liaison with BEIS during delayed, difficult passage of RHI reforms;
  - GSHPA members' contrasting views of reforms
  - Preparation for post RHI environment,
- First Regional GSHPA events; a model to be developed and rolled-out UK-wide.

# GSHPA's Networking Event in 'The Crystal'



Mid-November

With tours of the  
plant room

Showcasing GSHPs  
in large buildings

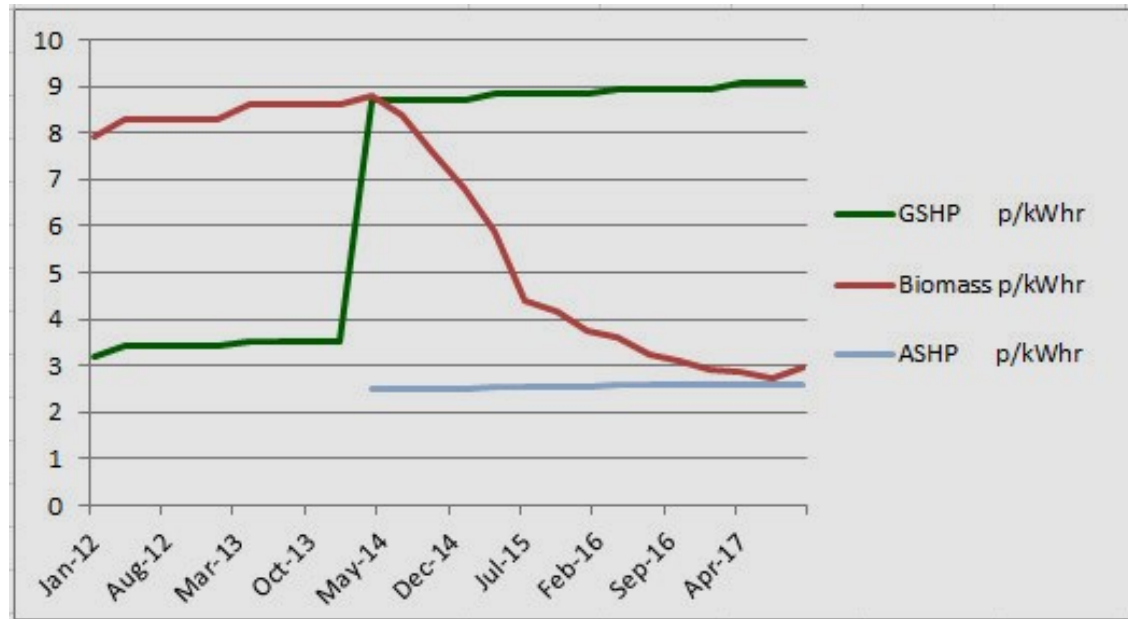
*Raising the profile  
of GSHPs with the  
larger consultancies*

# Objectives

- Training, based on existing and planned Standards and CP2 and CP3
- BEIS liaison; preparation for post RHI environment
- Technical panel to help members with mediation, quality of install and dispute resolution
- Strengthen ties with aligned organisations
- Further Regional GSHPA events to bang the drum. After all there has never been a better time to install GSHPs. Here's 2 reasons why;



# RHI Income



GSHP; over three times higher than ASHP and biomass

Changes to Biomass rates due on Sept 20<sup>th</sup>; little actual impact on RHI income

# CO<sub>2</sub> from Heating systems

UK grid at : 2017-07-27 20:00

is emitting : 223 grammes CO<sub>2</sub> /kWh

Ground Source Heat Pump (400%):	56
Ground Source Heat Pump (320%):	72
Direct Electric heating (100%):	223 grammes CO <sub>2</sub>
Gas boiler (85%):	215 per kWh delivered
Oil boiler (85%):	320 heat
Coal (50%):	630

**GSHP**  
**association**

[www.gshp.org.uk](http://www.gshp.org.uk)

Displaying the CO<sub>2</sub> released from different heating technologies. GSHP values are for 2 typical levels of efficiency; 320% (COP=3.2) & 400% (COP=4). Grid carbon intensity uses real-time data. The value reflects the decline in generation from coal & the growing contribution from renewable power technologies.

Data courtesy of Elexon portal & Sheffield University Original thinking JCW Parker  
Developed & sponsored by GeoScience Ltd. Running on pythonanywhere

[View live UK generation status](#)

GSHP; A low  
carbon  
heating/cooling  
technology...  
and becoming  
consistently  
lower!

**GSHP**  
**association**



**THANK YOU to all speakers,  
exhibitors, members and visitors  
GSHPA EXPO 2017**