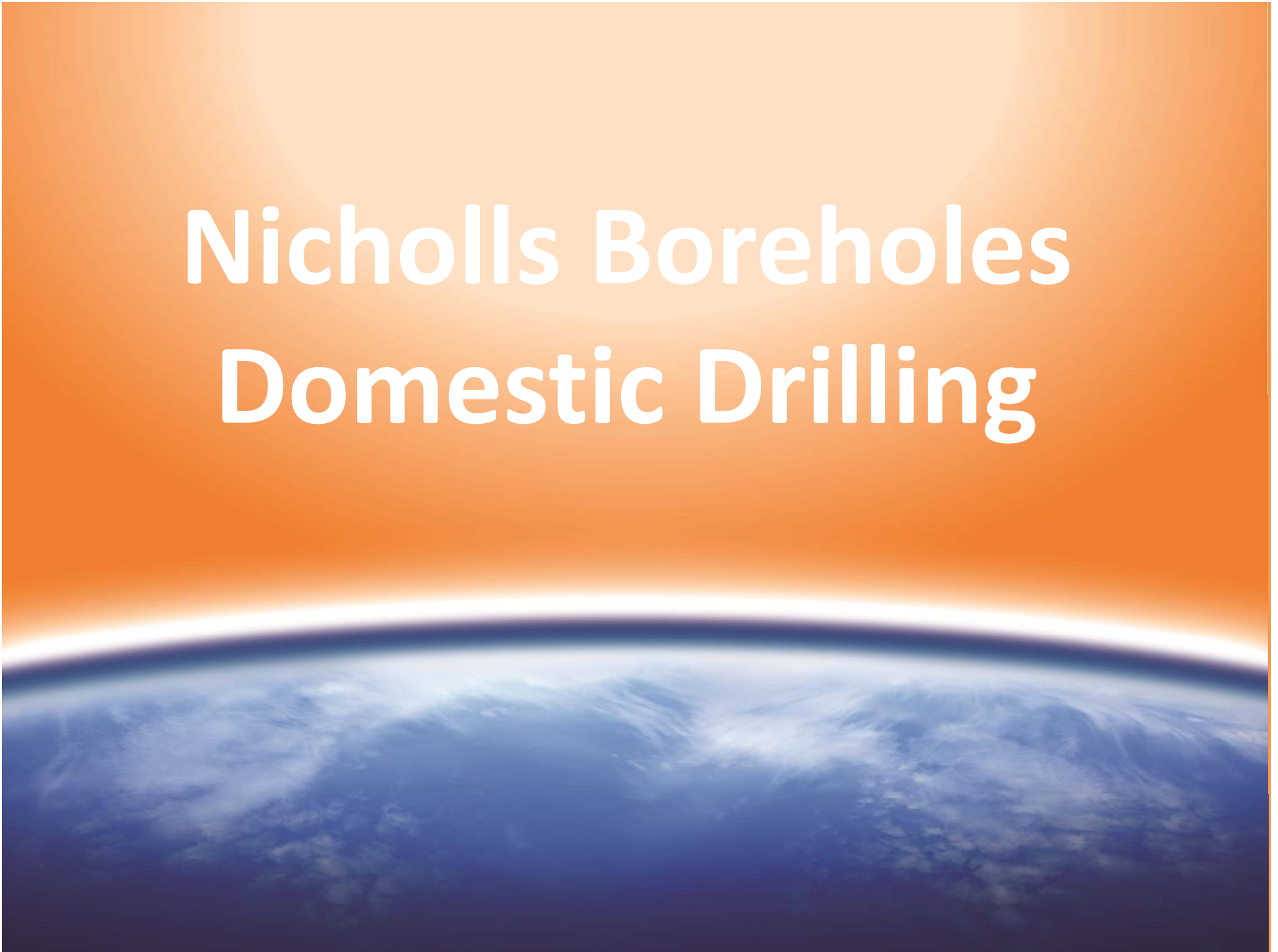


Nicholls Boreholes Domestic Drilling



Introduction



- Nicholls Boreholes is an established family run business based in West Sussex.
- We have combined experienced staff and up-to-date machinery to ensure an efficient service in nearly all locations and geologies.



- We specialise in drilling and installing boreholes for ground source heat pumps, waterwells and deep bore soakaways in the South East.



Our Experience

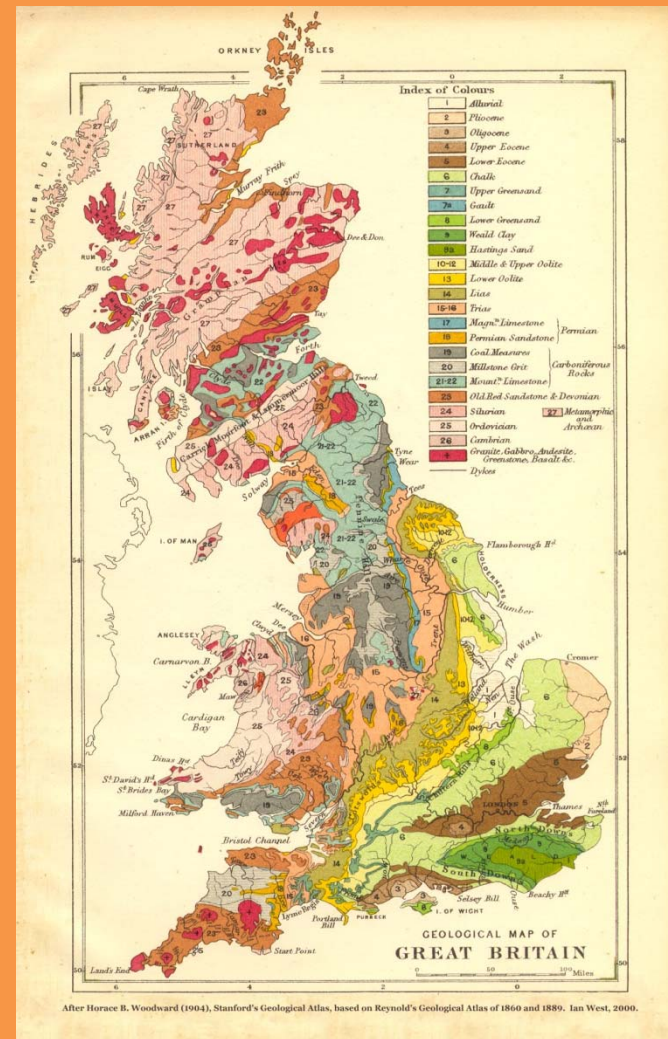
- We have completed over 150 domestic ground source borehole systems over the last 6 years.
- Including open loop and closed loop systems.
- We also undertake Commercial projects.
- We run 4 rotary drilling rigs.

Domestic Borehole Installations

- Use experienced professionals
- Use the best materials
- Use the best equipment
- The driller is a representative of your company
- Taking responsibility

Geology

- Can I have a borehole anywhere?
- Obtain geological assessments for clients to give a clear picture of what can be expected on site.
- What affect does this have on your system?



Geology

- Trust in your driller is essential
- As is the relationship you build
- Being aware of potential risks
- Design responsibility
- Good record keeping

Equipment

Our fleet of drilling rigs are capable of drilling 200m



Drilling rigs



Additional Equipment

Pumper Dumpers



Mud Tanks



Site Access

This can often be tricky for domestic projects and may involve using cranes to lift equipment onto site...



...or the rig to be driven through the existing buildings.



Additional Equipment

Loop Feeder



Mud Cleaning System



Installation

Grout Machine



Borehole Probe





Headerworks

- Use experienced installers
- Cap every open end
- Understand that contamination within the system can affect the lifespan of the glycol



4-1 Manifold

Fusion weld – not push fit!

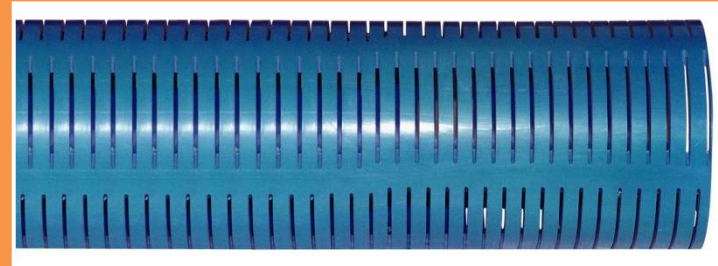


Pressure testing



Waterwell Installations and associated works

Water Borehole after installation



Record Keeping

- Drilling logs
- Pressure testing certificates
- Headerworks installation details
- Site plan
- Flow testing
- Biocide

Health & Safety

- Conform to the Health and Safety at Work Act 1974.
- Committed to CSCS construction certification scheme
- We have an in-house Health and Safety Officer
- NVQ Qualified drillers
- Enforce the wearing of personal protective equipment for employees and subcontractors.
- Carry out risk assessments and produce method statements where necessary before works start.



Best practice of installation

- Following GSHP Association best practice guidelines
- Use the best materials
- Consideration of other project locations
- Don't try to get away with less
- Follow EA recommendations
- Do searches that include London Underground, tunnels and drainage



How much will it cost?

- Don't just go with the cheapest price
- Check what they are responsible for?
- Variables – waste removal
- Get a clear line between contractors

Contact us for more information

nicholls boreholes.co.uk



Nicholls Countryside Construction Ltd.
Brownings Barn, Glasshouse Lane
Kirdford, West Sussex RH14 0LW

Tel: 01403 820750
Fax: 01403 820721
enquiries@nicholls boreholes.co.uk

www.nichollsltd.com
www.nicholls boreholes.co.uk
Company Registration No. 04576707