



A network for environmental practitioners

Paul Southall - Founder

paul.southall@nationaltrust.org.uk



National Trust Going Green

Fit for the Future "The way to get started is to quit talking and begin doing." Walt Disney



Collective Impact

Our membership look after

19

world heritage sites



> 40,000

more than 40,000 buildings



They consume

729,933,488 kWh

and are collectively generating

5.5%

5.5% of their energy using renewables



and have 358 renewable energy projects

358




CO₂

The CO₂ saved by members from generating energy using renewables equates to 1,766 trips around the world in an average petrol car

○ The Network has hosted more than 30 events, site visits and meetings enabling 988 practitioners to collaborate and share knowledge



We have been working with members to help them monitor energy consumption 



What We've Done This Year



○ Some of our new members

TATE **N** **NATURAL HISTORY MUSEUM**  **CANCER RESEARCH UK**  **NATURAL ENGLAND**

Sharing experience with heat pumps



Plas Newydd marine source heat pump



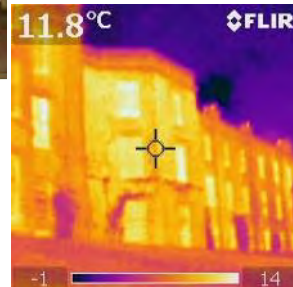
2009

128,000 ltrs of oil pa

1,500 ltrs a day in winter

1,200,000 Kwh pa

300,000 kwh of electricity





Ymddiriedolaeth
Genedlaethol
National Trust

School of Oceanographic Sciences

Seabed surveys, temperature analysis. They have a boat!

Castle Howard
Heat Pump

RNLI

Working with the sea
and metallurgy

HHA

LED Light Development

Local Authorities

Maintenance contracts

Centre for Alternative Technology

Hub, Students and specialists

Who's helped at Plas Newydd

Caernarfon Harbour Trust

Working with the sea
and navigation authority

Carbon Trust

Funding for
dynamic modelling,
options appraisal

Poole Tidal

Energy Partnership

Got us to think

The Crown Estate

Facilitation

English Heritage

Secondary glazing
and curtains

British ports Authority

Sea Water Source
Heat pump

Good Energy

Energy Trading advice

Become a member of the Network

www.fftf.org.uk

chloe.hampson@nationaltrust.org.uk



Fit for
the Future